

LCD Symbols

Turning on/off the thermostat	Automatic mode, executes the programmed schedules	Day of the week. Day 1 = Monday, Day 2 = Tuesday... etc.	Touch to start programming of your thermostat
The buttons are locked	Temporary temperature override	The program number	Touch to switch among Auto
Heating is turned on	The sensor is not being read by the thermostat	Reminding the user to connect the floor sensor (AF and F model only)	Decrease
Frost protection activated	Increase	Comfort temperature mode	Touch to complete a task
Room temperature	Touch to run all day	Economy temperature mode	Run a set task
Floor temperature	Delete an action	Vacation temperature mode	Previous
	Next	Touch to view floor temperature for 5 seconds (AF and F model only)	

Configuration Menu

To enter into menu settings, touch to turn thermostat off, and now touch Then you will see menu 01. Touch or to select the menu Use or adjust the settings. Touch to accept and store.

Menu #	Features description	Features Explanation	Touch or to adjust
01	Model selection	This thermostat is a combination model allowing you to choose among 3 models. A model: air only, with built in sensor AF model: air & floor, with both built in and remote sensor F model: floor only, with remote sensor	A, AF, F
02	Switching differential	The numbers of degree difference before switching. The default is 1°C which means the thermostat will switch the heating on 0.5°C below the set temperature and will turn it off 0.5°C above the set temperature. With a 2°C differential, the heating will switch on 1°C below the set temperature and switch off 1°C above the set temperature.	1°C, 2°C, ...10°C, 1°C by default
03	Calibrate the room temperature	To compensate for any difference between the displayed room temperature and a thermometer	0°C by default, -5°C ~ +5°C
04	Calibrate the floor temperature	To compensate for any difference between the displayed floor temperature and a thermometer	0°C by default, -5°C ~ +5°C
05	Maximum floor temperature	This is to protect the floor surface by limit the floor temp. (AF model only)	40°C by default, setting range 20°C ~ 40°C
06	Backlight turning-on time	To set the backlight turning-on time when the screen is pressed.	10, 20,30,40,50,60 seconds. 30 seconds by default
07	Temperature format	This allows users to select between°C or °F.	C / F
08	Clock format	12 Hour or 24 Hour clock format selection	24H / 12H 24 hour clock by default
09	Frost protection	This is to avoid room temperature goes below 5°C	ON = activated OFF = deactivated
10	5+2 / 7 Day program mode	This allows you to program either 5 days at once, then the 2 days of the weekend separately or a full 7 days at the same time or 7 days separately	5 2 = 5+2 day programmable 7 = 7 day programmable (by default)
11	Key click sound	Choose whether or not a key click sound is audible when you press the LCD screen	ON = sound audible; OFF = sound off
12	Software version	This is to view the current software version	For review only

Select the required operating mode

Auto - Automatic mode, the thermostat executes the pre-programmed schedules. To adjust these schedules, see **page 2** the program section.

In addition to Automatic mode, this thermostat has 3 manual modes: , each of these manual modes maintains a constant set temperature set by the user.

- Comfort temperature mode, the highest temperature you want to achieve, this is the temperature that will be required when the room is in use. Default is 22°C.
- Economy temperature mode, the lowest temperature, the temperature you want to go no lower than when the room is not in use. Default is 16°C.
- Vacation temperature mode, this is set to stop your floor from going below the set temperature. Default is 10°C. To change the set temperatures, touch temperature display. Use or to adjust to the required temperature. Touch to store and exit.

Setting the clock and day the week

This thermostat is fitted with a real time clock. It is essential that the clock time and day are set accurately if you require your programmed events to start on time. Follow the steps below,

- Touch time display . Use or to change the time. Press and hold or to change the time faster. Touch to store and exit (or touch time display to cancel and exit).
- Touch day display. Use or to change the day. Touch to store and exit (or touch day display to cancel and exit).



Save money by setting program schedules

This thermostat can be individual 7-day programmable. For each day of the week you are able to have 4 timed set temperature schedules.

Program	Start Time	Setpoint	Explanation
01	WAKE 07:00	22°C	Set to the time you would like to wake to and the temperature you want during the morning, until you left for the day.
02	LEAVE 09:30	16°C	Set to the time you leave home and the temperature you wish your home to maintain while you are away at work perhaps.
03	RETURN 16:30	22°C	Set to the time you return home at end of the day and the temperature you want during evening until bed time.
04	SLEEP 22:30	16°C	Set to the time you sleep and the temperature you want overnight(usually a comfortable and energy saving temperature).

Above are default program schedules, to make changes, follow the easy steps below

In 7 day program mode

1. Press , you will see day display flashing.
2. Use or adjust the day to the day you wish to start programming or to the day you wish to edit an existing event or program. (Press to select all days of the week, to cancel selecting all days of the week, press again.)
3. Press , the LCD will show program 1 with the time display flashing.
4. Use or adjust the time you wish the program 1 event to commence for the currently selected day or days.
5. Press , the LCD will show a temperature value flashing
6. Use or the desired heating temperature to be maintained for the program 1 event.
7. Press , now the LCD will show program 2 with the time display flashing, signifying the second daily event is now being programmed.
8. Repeat step 4,5,6 to set remaining programs. Press to store and exit.

Note: It is faster to program the same schedule for the entire week and then to adjust the exceptional days.

In 5+2 day program mode

1. Press , you will see the time flashing.
2. Use or to set your weekday Wake time(Mon-Fri), then press
3. Use or to set the temperature for this time period, then press
4. Set time and temperature for the next time period(Leave). Repeat steps 2 and 3 for each time period of the weekday.
5. Press to move to the weekend(sat-sun) time periods settings.
6. Press to save and exit.

**Note: Day 1 - 5, refers to the weekday(Monday to Friday)
Day 6 - 7, refers to the weekend(Saturday and Sunday)**

During setting programs, press (if visible) will clear a program entry and thermostat will maintain the temperature setpoint of the last executed program until the beginning of the next program.

Reset to Factory Settings

With thermostat turned off, press and hold the up left corner of display for 5 seconds until you can see "RES" (RESET) on LCD.

Lock the Keypad

To lock the keypad, press and hold the bottom left corner of display for 5 seconds, you will see a lock symbol . To unlock, repeat the steps above.

Temporary Temperature Override

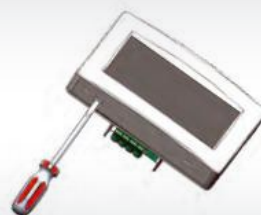
Touch the temperature display, and it will start to flash. Use or to adjust. Press to accept, and you will see "O/RIDE" on LCD.

Thermostat will maintain the new set temperature until the next programmed event(comfort level). To cancel the override setting, press

Installation and Wiring Instructions

STEP 1

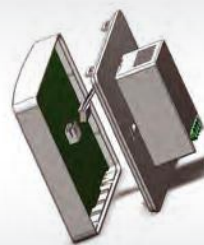
1



Carefully separate the front half of the thermostat from the back plate by placing a small flat head terminal driver into the slots on the bottom face of the thermostat

STEP 1

2

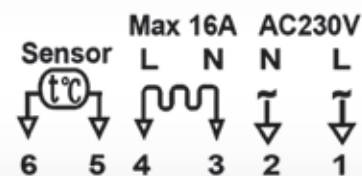


Carefully unplug the ribbon connector which is plugged in to the front half of the thermostat

STEP 1

3

Place the thermostat front half somewhere safe. Terminate the thermostat as shown in the diagrams



STEP 1

4



Screw the thermostat back plate on to the back box

STEP 1

5



Re-connect the thermostat ribbon cable and clip the two halves together

