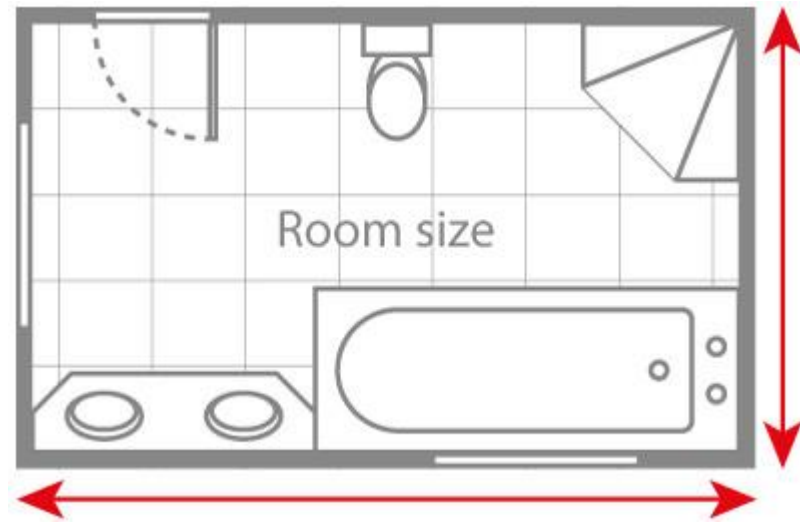


ELECTRIC MATS & INSULATION BOARDS SIZE GUIDE

What Size Heating Mat Do I Need?

Step 1. Measure Your Room

When planning on installing your underfloor heating system, you should first measure the Total Floor Space of the room.



Step 2. Find Out Your Free Floor Space

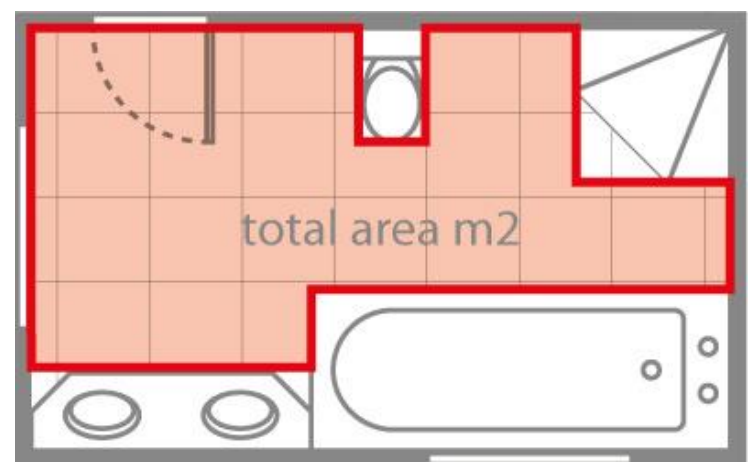
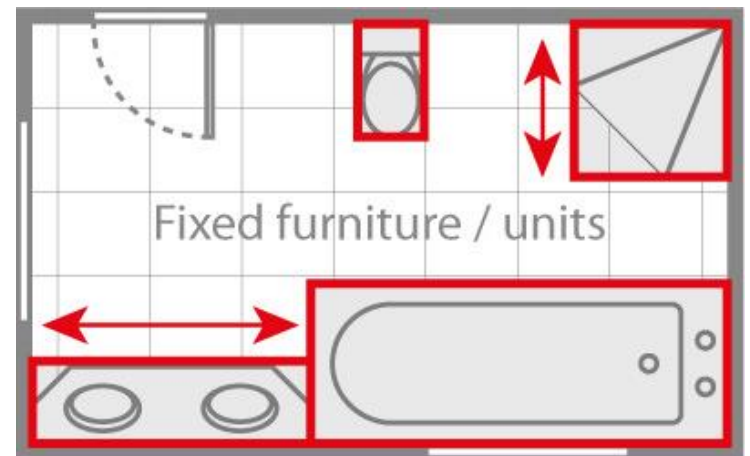
You should then work out the area of Free Floor Space in m² by accounting for any permanent fixtures or fittings in the room (e.g. bath, toilet).

Remove 10% from this figure and use this to place your order.

You should cover 80-95% of the free floor space available. Anything less than this will lead to patches of cold spots.

e.g. Conservatory measurement

Total Floor Space = 12m²
 Free Floor Space = 10m² - 10% = **9m²**



How Many Insulation Boards Do I Need?



Each ProWarm insulation board is 1200 x 600mm and covers a total area of 0.72m².

For a free floor space of 9m², you would need 13 ProWarm insulation boards.

Size Of Electric Mat Kit	ProWarm Insulation Boards Required
1m ²	2
2m ²	3
3m ²	5
4m ²	6
5m ²	7
6m ²	9
7m ²	10
8m ²	12
9m ²	13
10m ²	14
11m ²	16
12m ²	17
13m ²	19
14m ²	20
15m ²	21
16m ²	23
17m ²	24
18m ²	25
19m ²	27
20m ²	28
21m ²	30
22m ²	31
23m ²	32
24m ²	34
25m ²	35
26m ²	37
27m ²	38
28m ²	39
29m ²	41
30m ²	42