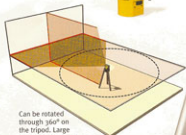


# STABILA Type LAX 50: The "from floor to ceiling" laser.

- Crossed line function • Self levelling
- Can be rotated through 360° on the tripod
- Combined tripod / telescopic leg kit • STABILA quality
- Ideal as an entry-level or second instrument

The main attraction – the combined tripod / telescopic leg kit! The STABILA LAX 50 is supplied complete with a tripod adapter plate and three tripod legs. The tripod covers a space of 0.60 to 1.00 m. Screw the tripod legs together to form a telescopic leg which covers a maximum height of 2.75 m. Fix the telescopic leg between the floor and the ceiling (or between window recesses and door-frames), clamp the LAX 50 at any height on the leg and you can project the beam in all directions by simply rotating the instrument. And you can of course use the LAX 50 on the floor; in this case the working height is 7 cm.

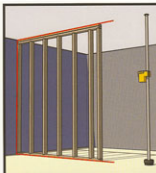


Can be rotated through 360° on the tripod. Large beam width – long, easily visible lines.

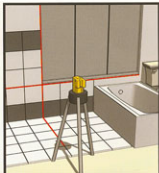
**NEW: STABILA  
Type LAX 50**  
Self levelling crossed  
line laser Available from



max. 2.75 m



For drywall constructors



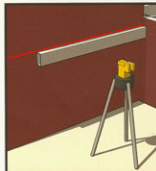
For tile layers



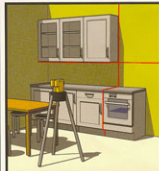
For painters and decorators



For plumbers



For electricians



For kitchen fitters



**BuyBrandTools.Com**

Quality Tools for the Professional